

Alphabet Soup of Disaster Response

John Haven

Director

College of Veterinary Medicine



NIMS

VET CORPS

SART

VETS

ICS

SARC

CART

SAADRA

VMAT

NAHERC

NVRT

Who Are All These Acronyms and What Are Their Roles?

- NIMS
- ICS
- SART
- SARC
- NAHERC
- SAADRA
- NVRT
- VMAT
- VETS
- VET CORPS
- CART

NIMS – National Incident Management System

“...a consistent nationwide approach for federal, state, tribal, and local governments to work effectively and efficiently together to prepare for, prevent, respond to, and recover from domestic incidents, regardless of cause, size, or complexity.”

-HSPD (Homeland Security Presidential Directive)-5

Aligns command, control, organization structure, terminology, communication protocols and resources/resource-typing

NIMS in a Practical Sense



- Establishing common goals
- Developing common strategies
- Identifying expertise and resources
- Creating partnerships and action plans
- Communicating with a common language
- Focusing on mission
- Sharing the credit

ICS – Incident Command System

- NIMS Component for organizational structure
- Works for incidents large and small – scalable
- Efficient use of resources from multiple agencies
- ICS 100, 200 and IS 700 recommended for a responder
- <http://training.fema.gov/IS/NIMS.aspx>

SART – What's in a Name?

- State Agricultural Response Team – Florida
- State Animal Response Team – North Carolina
- State Animal Resource Team - Texas

- Coalition of Federal, State, Tribal, Local, and NGO partners with a vested interest in responding together under the state lead agency – State Veterinarian's Office
- www.flkart.org

SART Identity



State Office with Only 150 Employees and Statewide Disaster Response Responsibilities without SART...



SART Partners



***During an Emergency
We all Work Together***



SARC – State Animal Response Coalition

- **Mission Statement:** *The Florida State Animal Response Coalition (FL-SARC) is a not-for-profit organization dedicated to all-hazard disaster preparation, planning, training, response and recovery during animal emergencies. FL-SARC is organized under the auspices of Florida state and local emergency management agencies utilizing the principles of The Incident Command System (ICS)*
- **Consistent training – one NGO to work with, instead of 10+ national and regional NGO's with different politics, training, etc.**
- **Homeland Security Approved Course!!!**
- <http://www.flsarc.org/>
- **1000 people trained in FL so far!**

Over 1,000 Volunteers Trained in 18 Months... and Still Training!



NAHERC - National Animal Health Emergency Response Corps

- USDA's Animal and Plant Health Inspection Service (APHIS) ready reserve of private practitioners
- Paid on activation
- Deployments for 3-4 weeks typically – may volunteer for longer terms
- Responds to exotic disease outbreaks and other disasters which affect livestock, poultry, companion animals, and wildlife – not natural disasters
- Veterinarians and Animal Health Technician positions
- http://www.aphis.usda.gov/animal_health/emergency_management/naherc.shtml

SAADRA: Southern Agriculture & Animal Disaster Response Alliance

- SAADRA's mission is to strengthen all-hazard capabilities through partnerships with the public, animal and agriculture industries, and every level of government.
- Focus on the safety and health of its citizens, food systems, agriculture infrastructure, animals, and economy.
- AL, FL, GA, KY, LA, MS, NC, SC, TN, TX

NVRT – National Veterinary Response Team

- Department of Health and Human Services through NDMS (National Disaster Medical System) manages volunteers
- Paid on activation
- Missions
 - Assessing the Veterinary Medical Needs of the Community
 - Medical Treatment and Stabilization of Animals
 - Animal Disease Surveillance
 - Zoonotic Disease Surveillance and Public Health Assessments
 - Technical Assistance to Assure Food Safety and Water Quality
 - Hazard Mitigation
 - Care and Support of Animals Certified as Official Responders to a Disaster or Emergency
- Organized Teams/Cache's of equipment regionally
- <http://www.phe.gov/Preparedness/responders/ndms/teams/Pages/nvrt.aspx>

NVRT in Action



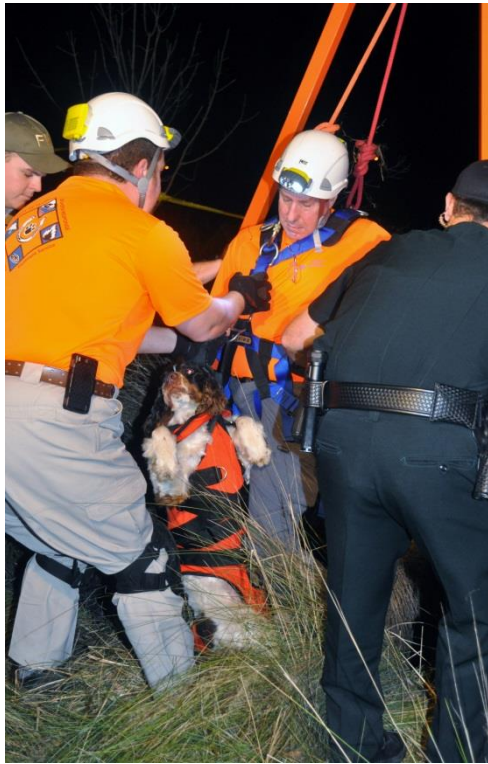
VMAT – Veterinary Medical Assistance Teams “New VMATs”

- Operated by the American Veterinary Medical Association and funded via AVMF
- Deploy teams of 4-6 people at the request of a state – funded by AVMF for first 3 days
- Conduct assessments and basic medical care
- Available for training on a wide variety of topics
- <https://www.avma.org/professionaldevelopment/trainingand-service/vmat/pages/about-vmat.aspx>

VETS – Veterinary Emergency Treatment Service

- University of Florida College of Veterinary Medicine's disaster response team
- Largest non-Federal response team in the country
 - Able to deploy 18 people in the field
 - Assessment, technical rescue, field hospital
 - Provides training to students!
- Faculty able to provide expertise in disease, epidemiology, patient care, etc.
- www.ufvets.com

VETS Team



Vet Corps

- Florida ready of reserve of private veterinarians and technicians – over 200!
- Owned and managed by FVMA (Florida Veterinary Medical Association)
- Operated as unpaid employees of FDACS (Florida Department of Agriculture and Consumer Services) – Division of Animal Industries – provides insurance, workers comp, etc.
- Members all do ICS training
- Some participate in field deployments with VETS, technical rescue training, etc.
- <http://www.flstart.org/vetcorps/>

Vet Corps



- Augment the VETS team is scale of deployment, or in duration of response
- Boots on the ground for the state veterinarian during a disease outbreak
- Work directly with counties as needed

CART or County SART

- Local Emergency Managers
- Animal care and control agencies
- Law enforcement
- Brand Inspectors
- Veterinarians/Technicians
- Cooperative Extension
- Animal related industry
- Fairgrounds
- Livestock associations
- Kennels & pet service providers
- Livestock producers
- Pet breed rescue & associations
- Public health
- Fire and EMS
- County mapping
- Wildlife agencies & zoos
- Concerned Individuals
- http://www.flsart.org/county_sart/





Questions?